



CITY OF
**PALO
ALTO**

Action Item (Item 2)

Rail Committee

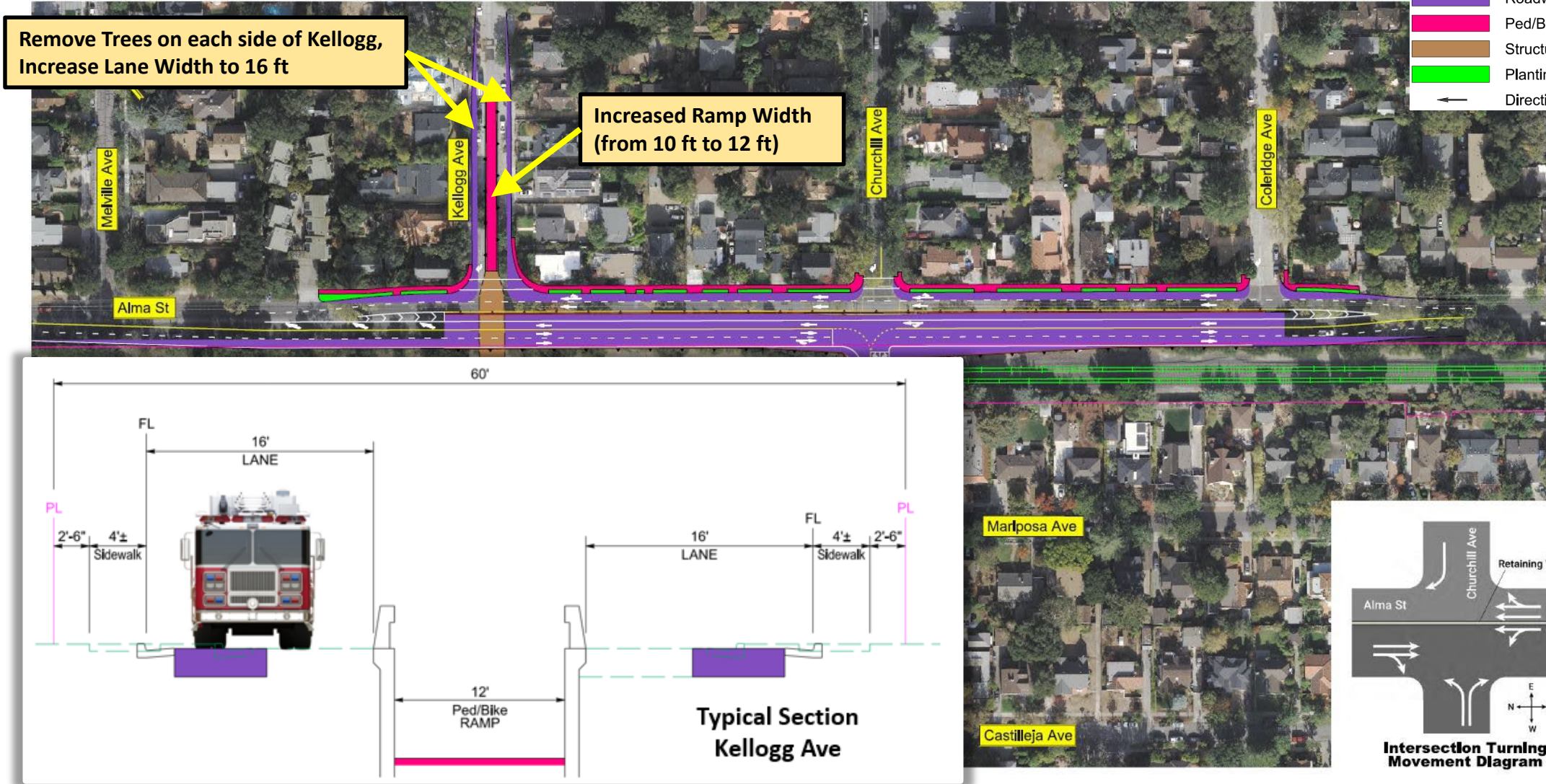
Design Updates on Conceptual Underpass Alternatives

Background

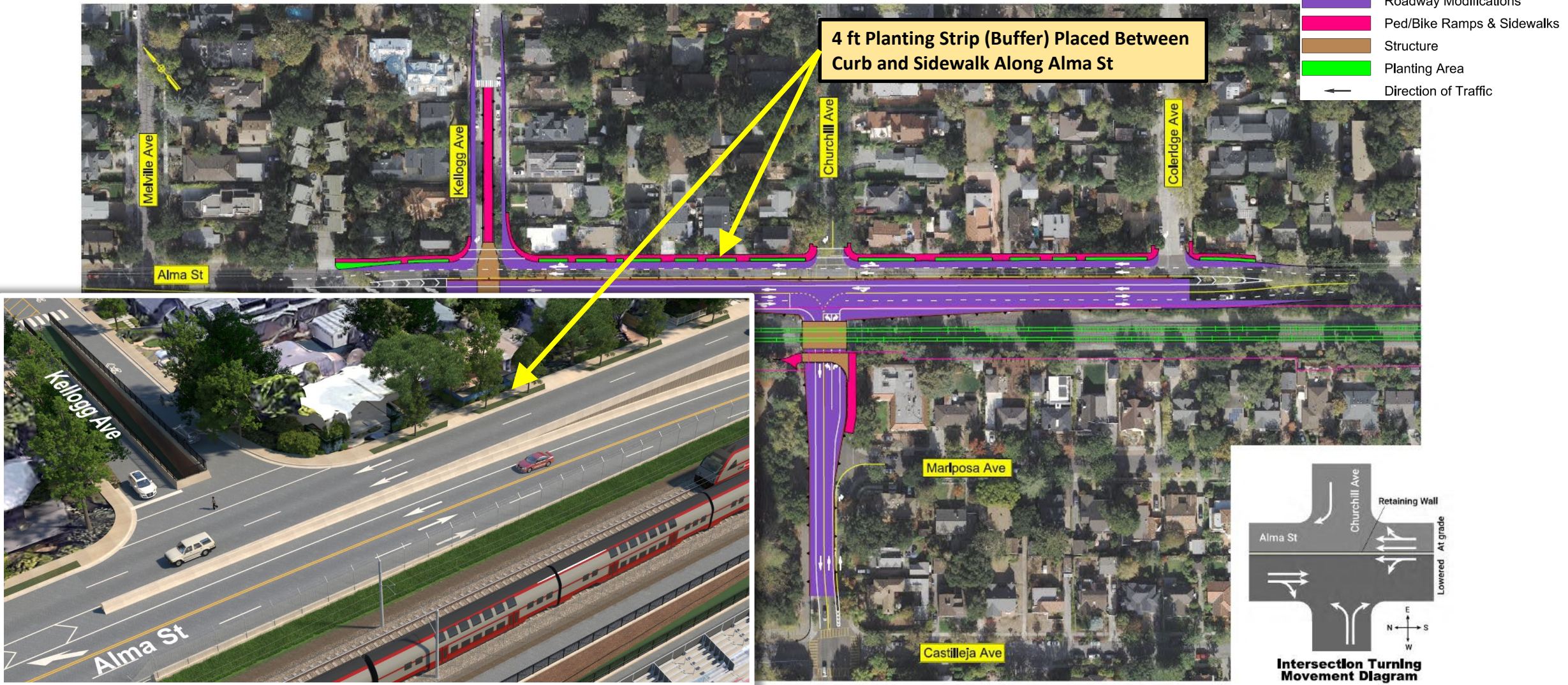
- Summer 2022: Comments received from various stakeholders (PABAC, PAUSD, Stanford, City School Transportation Safety Committee, and Members of the Community)
- Three underpass alternatives evaluated further, located at:
 - Churchill Ave
 - Meadow Dr
 - Charleston Rd
- Comments reviewed at two rail committee meetings:
 - October 19, 2022
 - November 18, 2022



Design Updates – Churchill Ave Underpass

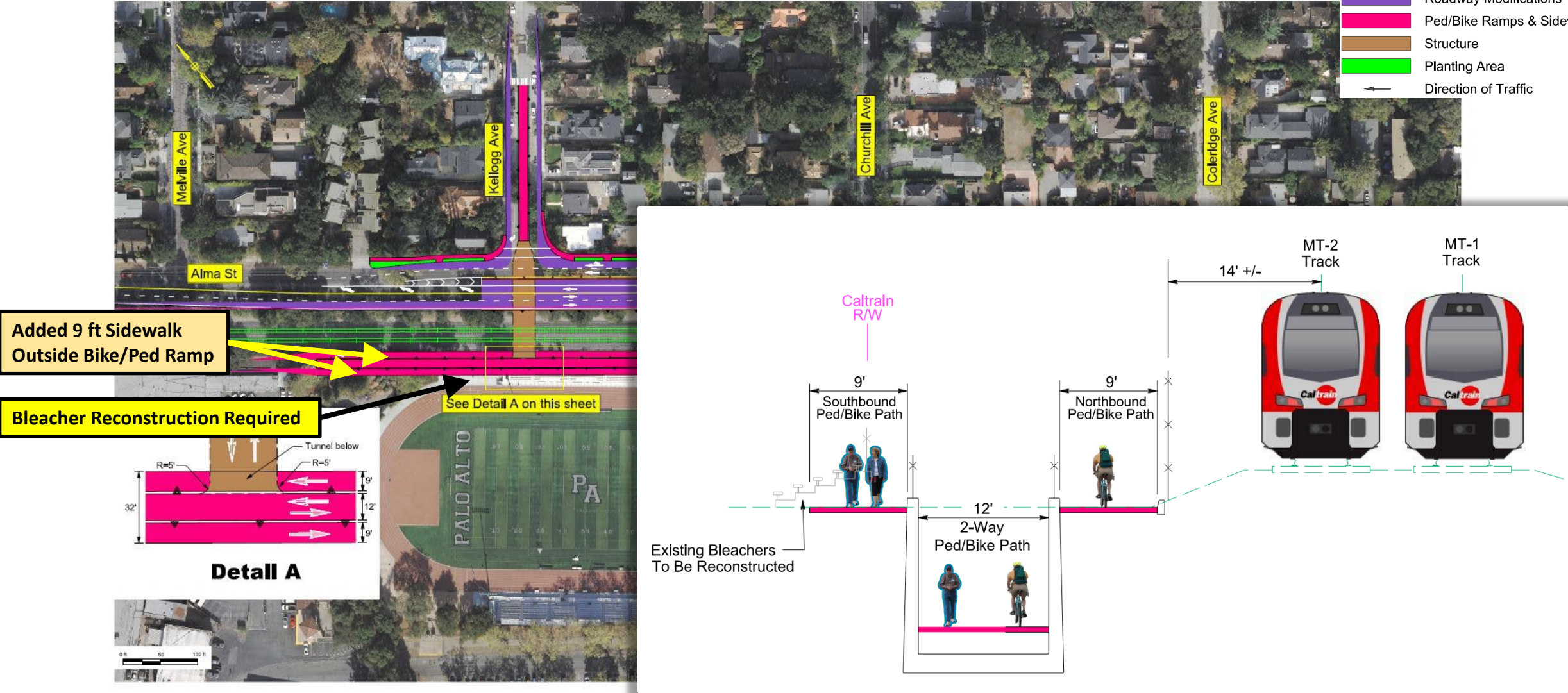


Design Updates – Churchill Ave Underpass



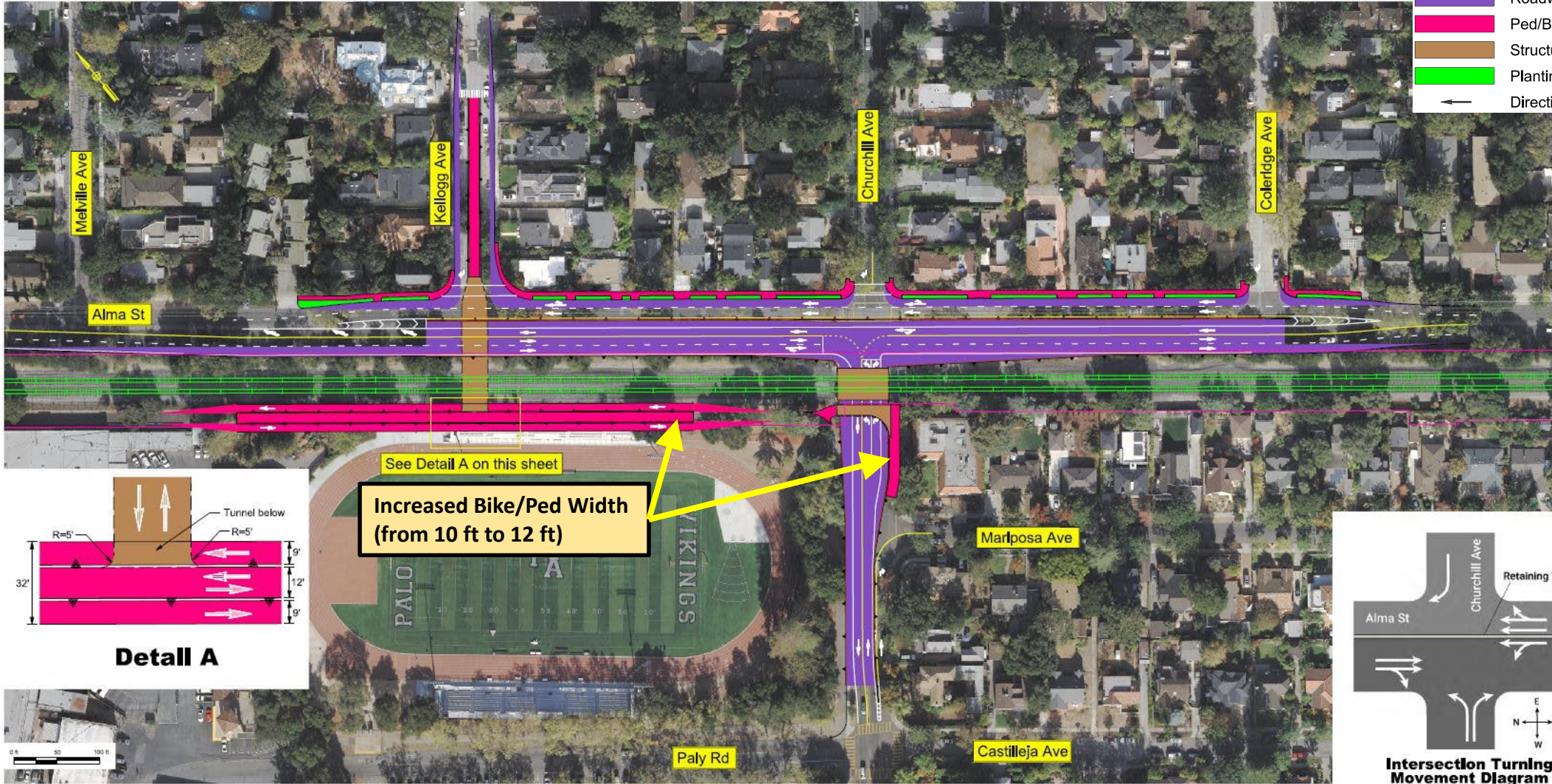
Design Updates – Churchill Ave Underpass

- LEGEND:
- Track
 - Retaining Wall
 - Right-of-Way
 - Roadway Modifications
 - Ped/Bike Ramps & Sidewalks
 - Structure
 - Planting Area
 - Direction of Traffic

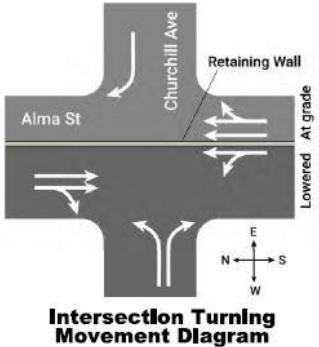
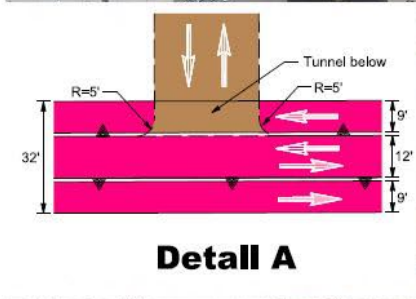
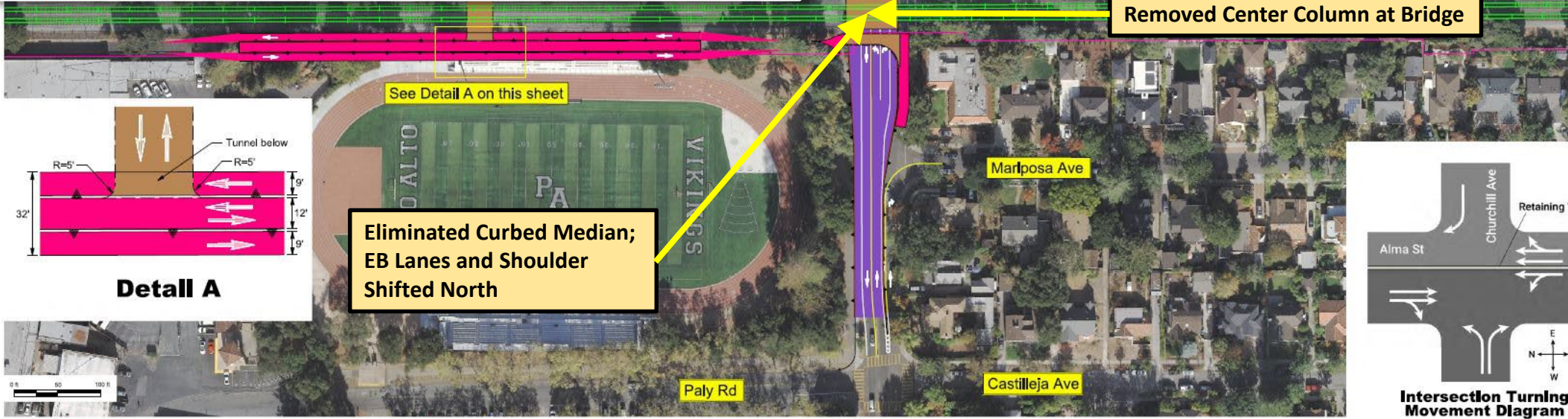
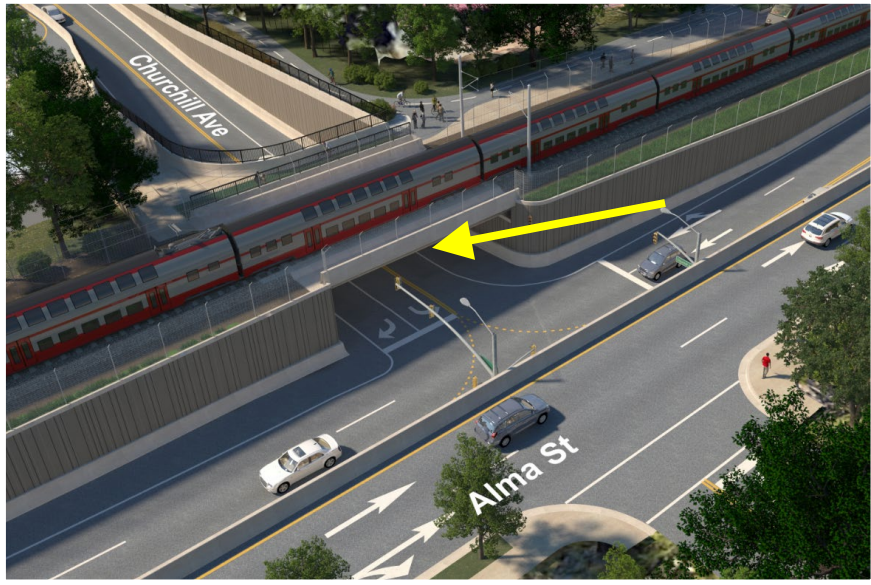
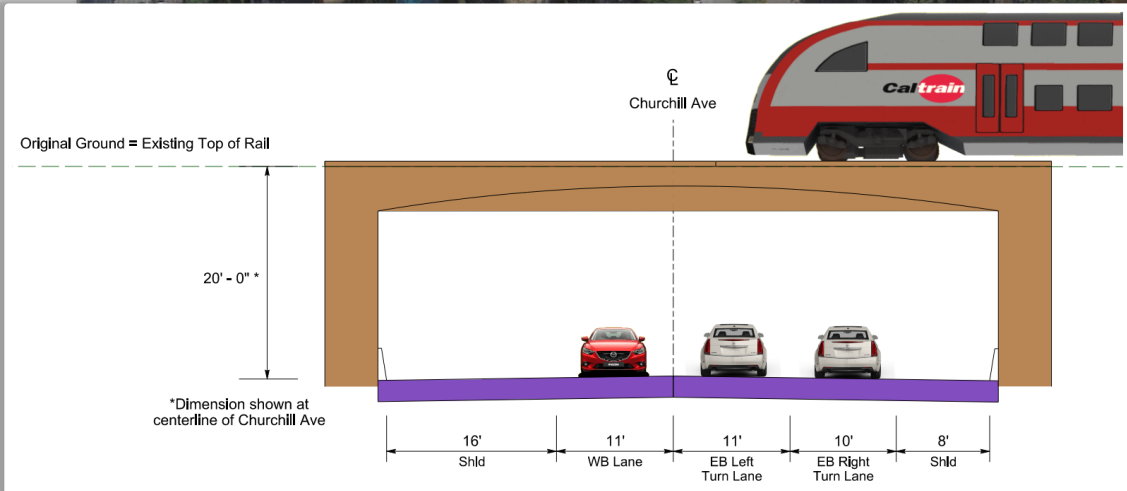


Design Updates – Churchill Ave Underpass

- LEGEND:
- Track
 - Retaining Wall
 - Right-of-Way
 - Roadway Modifications
 - Ped/Bike Ramps & Sidewalks
 - Structure
 - Planting Area
 - Direction of Traffic

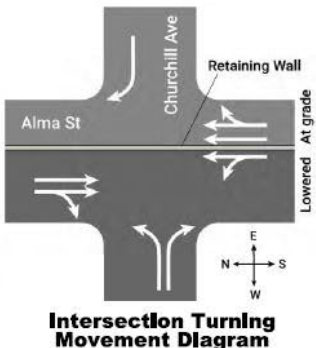
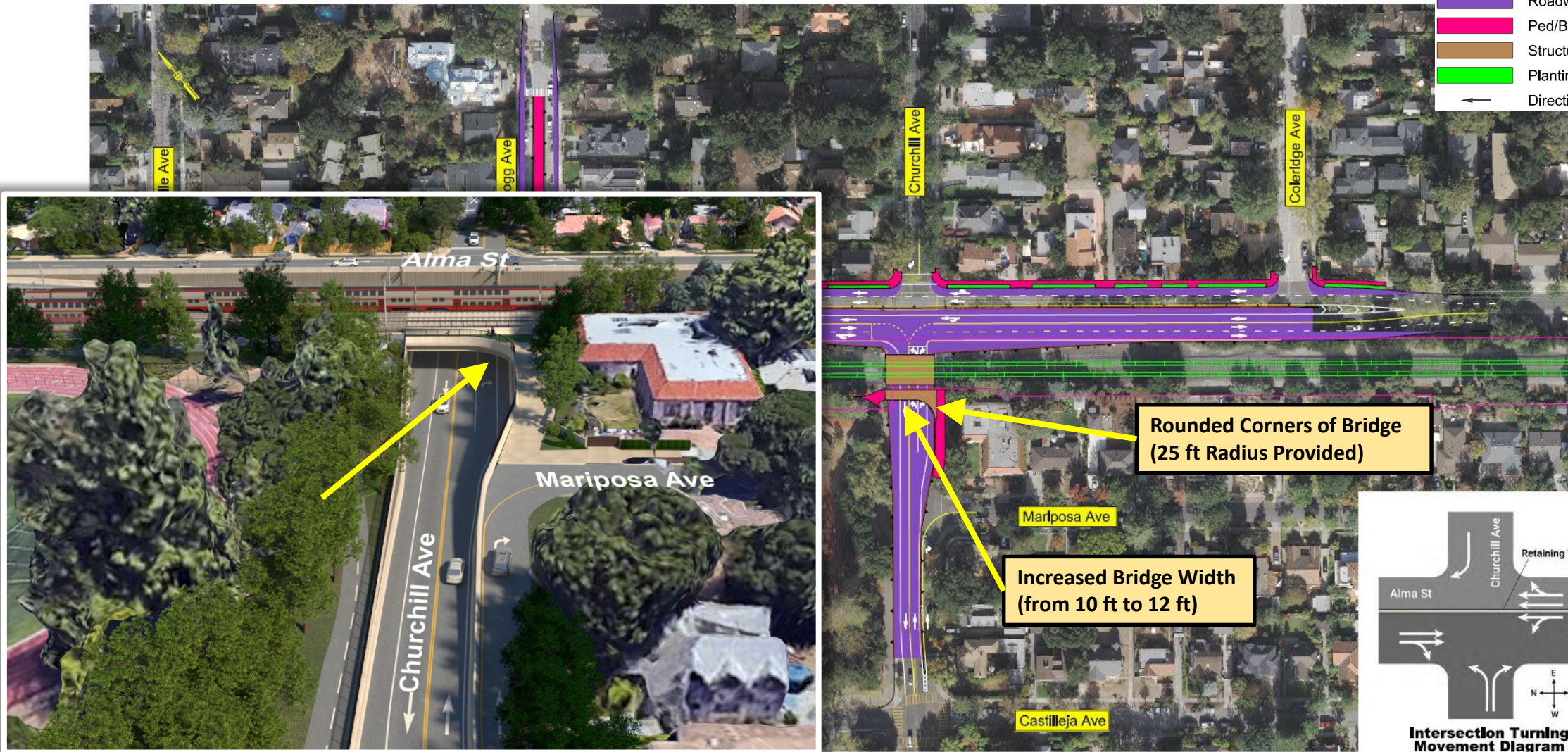


Design Updates – Churchill Ave Underpass

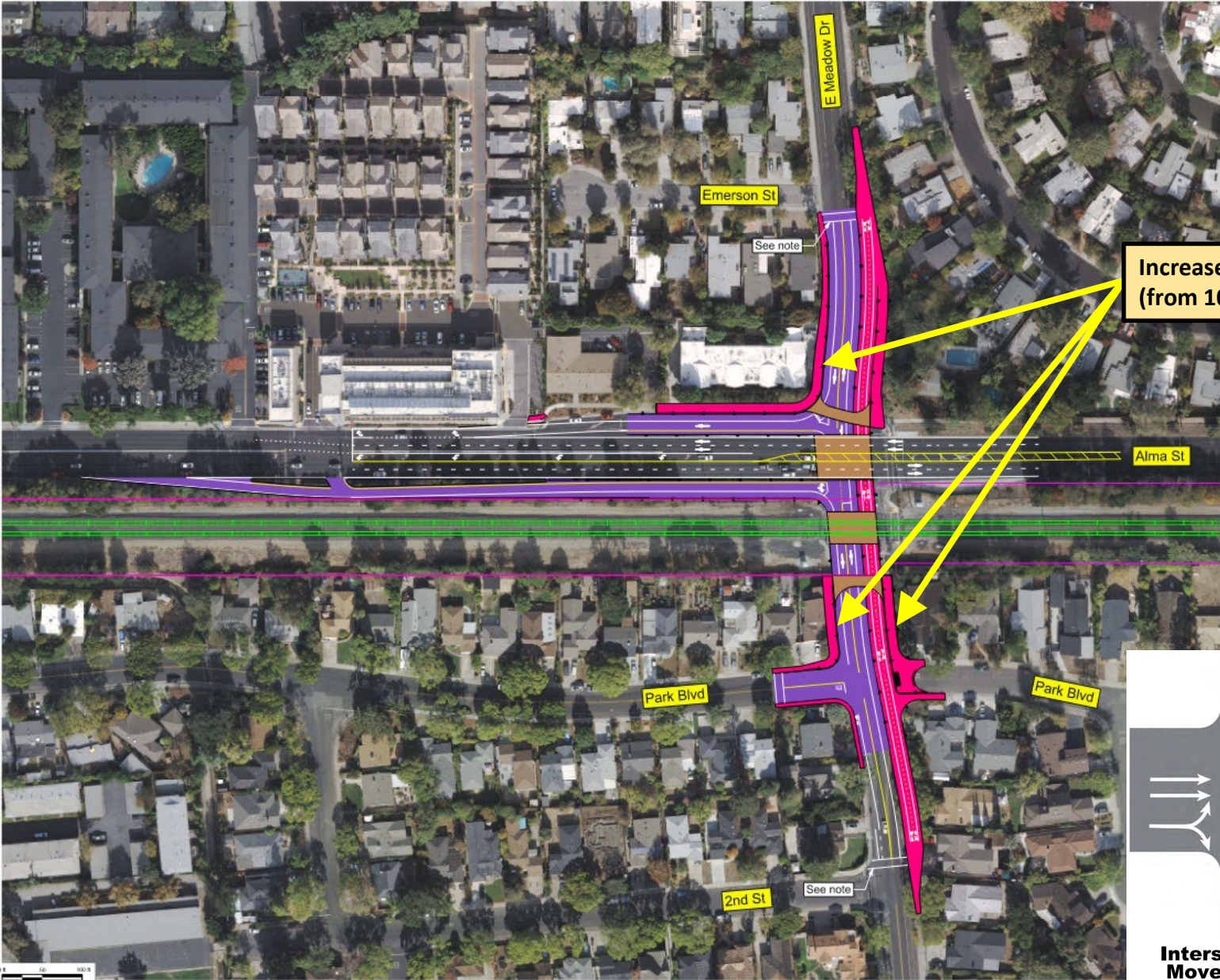


Design Updates – Churchill Ave Underpass

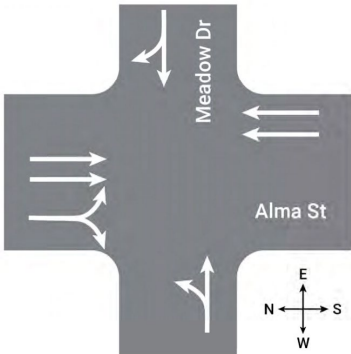
- LEGEND:
- Track
 - Retaining Wall
 - Right-of-Way
 - Roadway Modifications
 - Ped/Bike Ramps & Sidewalks
 - Structure
 - Planting Area
 - Direction of Traffic



Design Updates – Meadow Dr Underpass

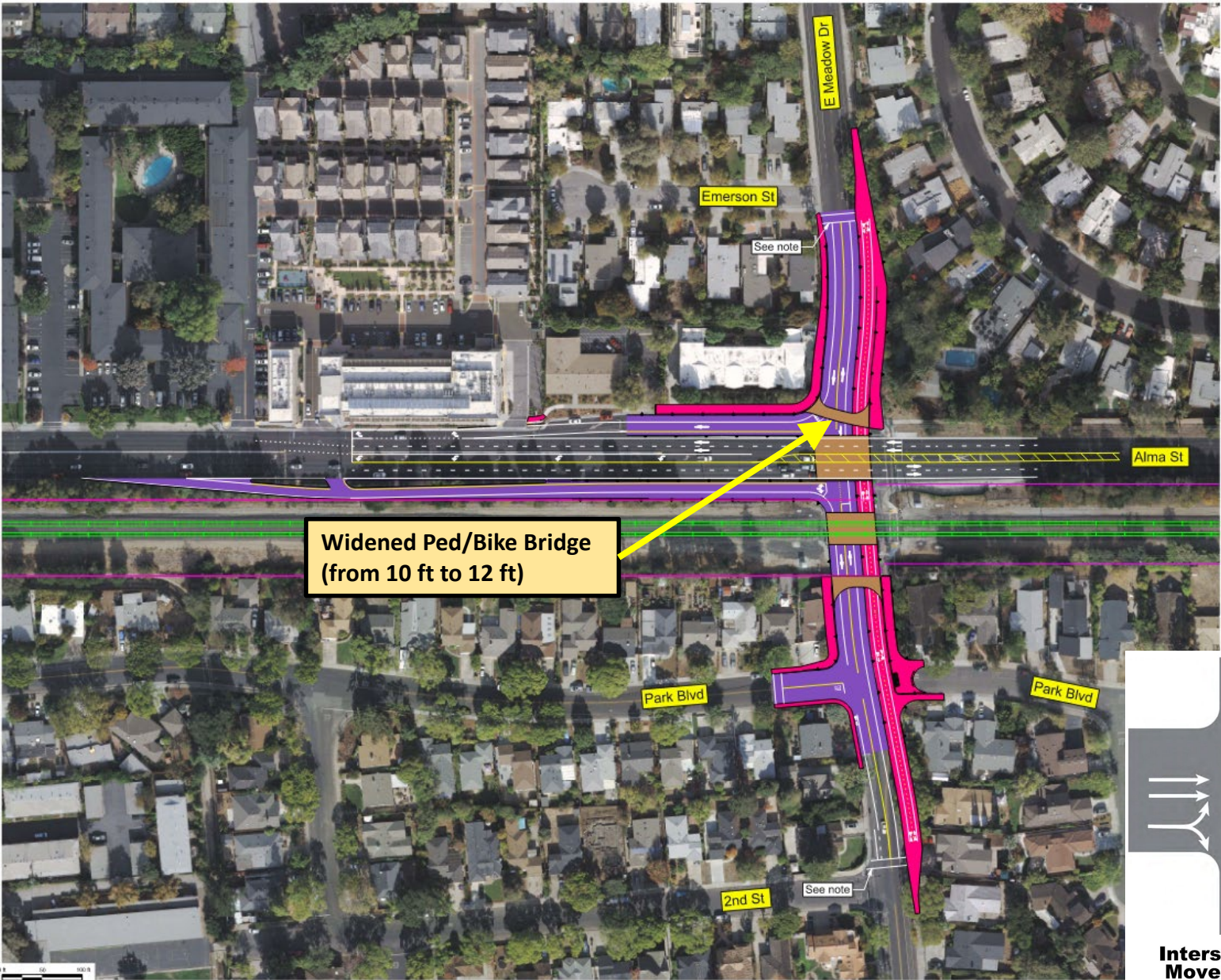


- LEGEND:**
- Track
 - Retaining Wall
 - Right-of-Way
 - Roadway Modifications
 - Ped/Bike Ramps & Sidewalks
 - Structure
 - Planting Area
 - Direction of Traffic

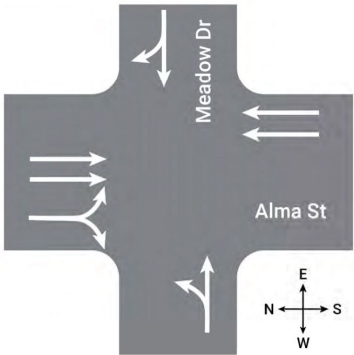


Intersection Turning Movement Diagram

Design Updates – Meadow Dr Underpass

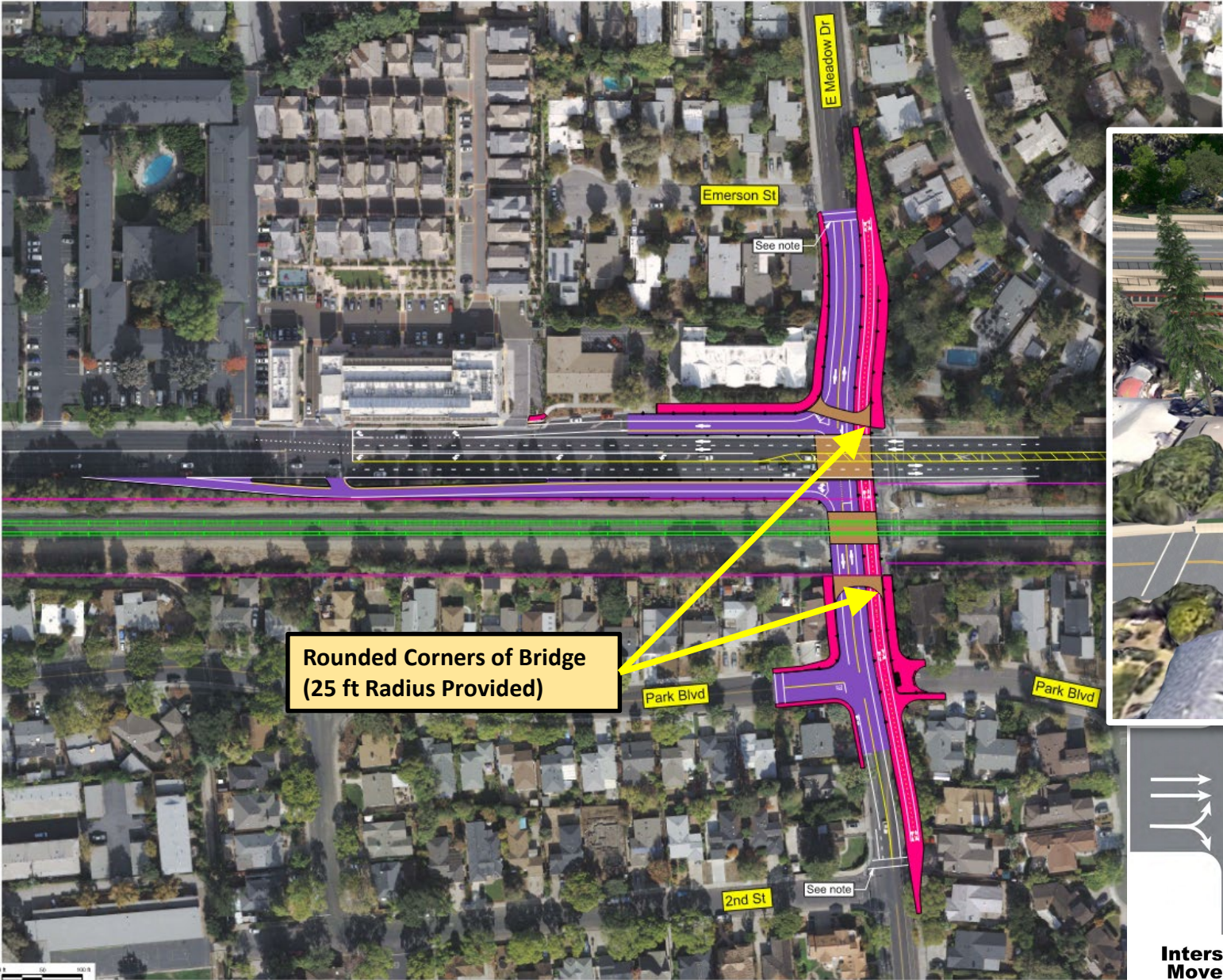


- LEGEND:**
- Track
 - Retaining Wall
 - Right-of-Way
 - Roadway Modifications
 - Ped/Bike Ramps & Sidewalks
 - Structure
 - Planting Area
 - Direction of Traffic

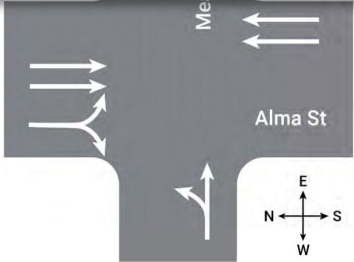


Intersection Turning Movement Diagram

Design Updates – Meadow Dr Underpass

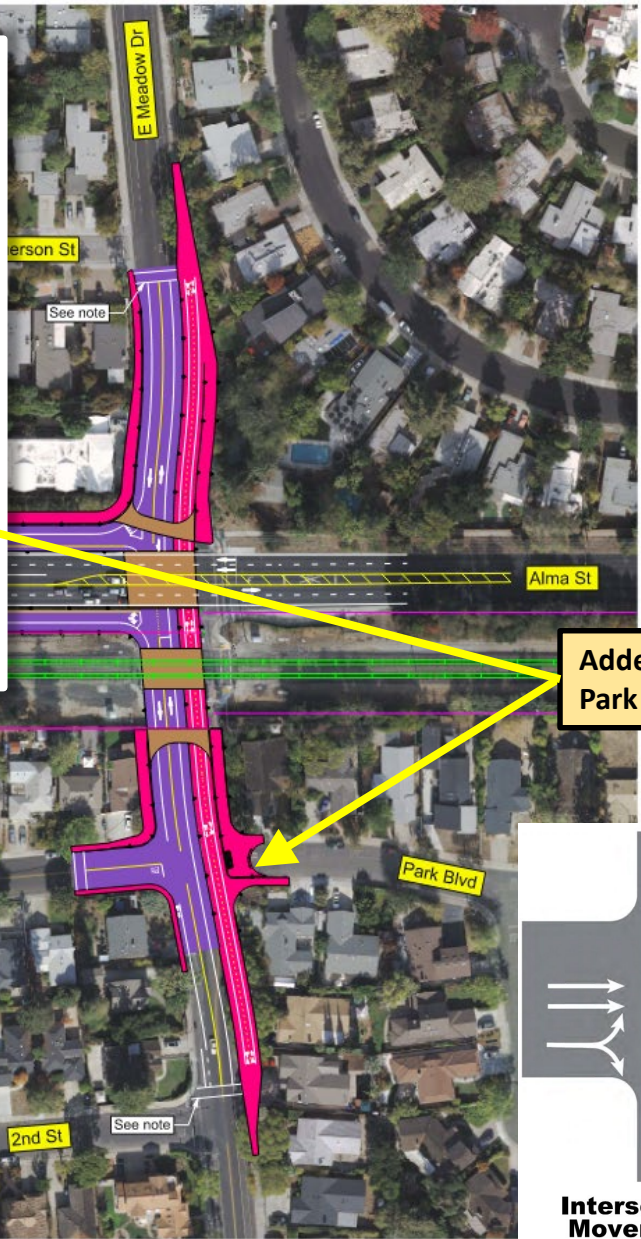


- LEGEND:
- Track
 - Retaining Wall
 - Right-of-Way
 - Roadway Modifications
 - Ped/Bike Ramps & Sidewalks
 - Structure
 - Planting Area
 - Direction of Traffic

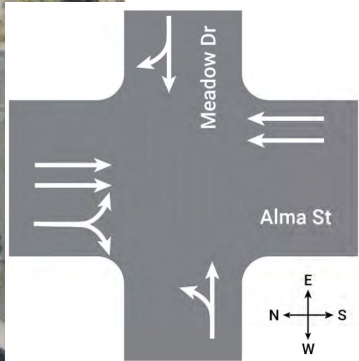


Intersection Turning Movement Diagram

Design Updates – Meadow Dr Underpass



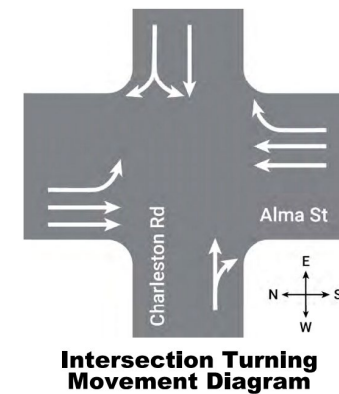
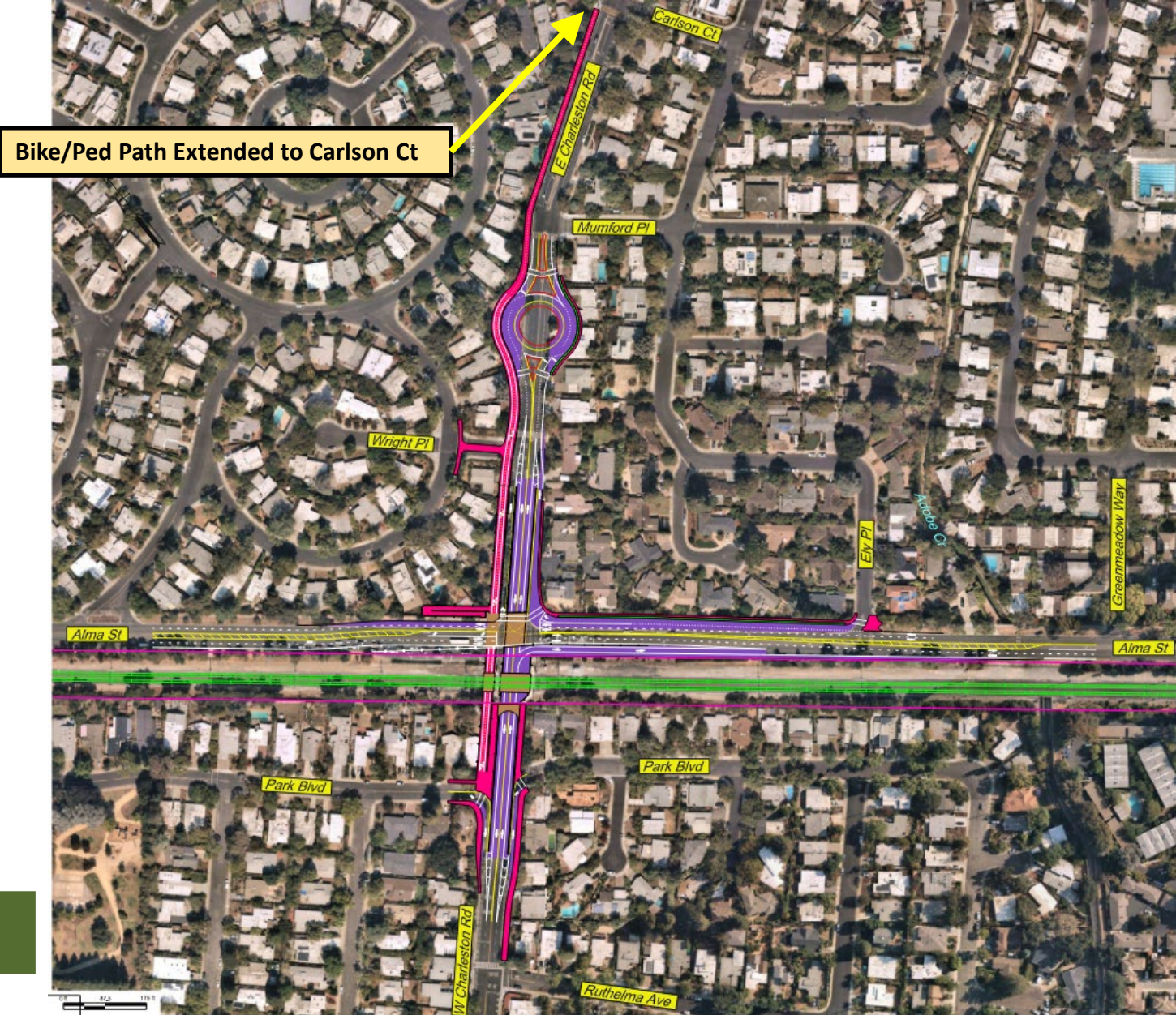
Added Barrier at
Park Blvd cul-de-sac



Intersection Turning
Movement Diagram

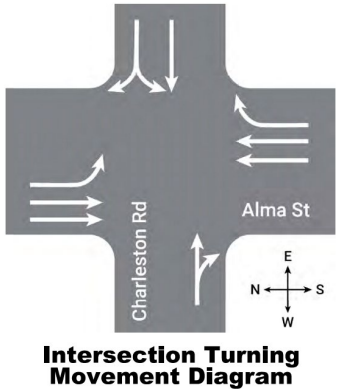
- LEGEND:
- Track
 - Retaining Wall
 - Right-of-Way
 - Roadway Modifications
 - Ped/Bike Ramps & Sidewalks
 - Structure
 - Planting Area
 - Direction of Traffic

Design Updates – Charleston Rd Underpass



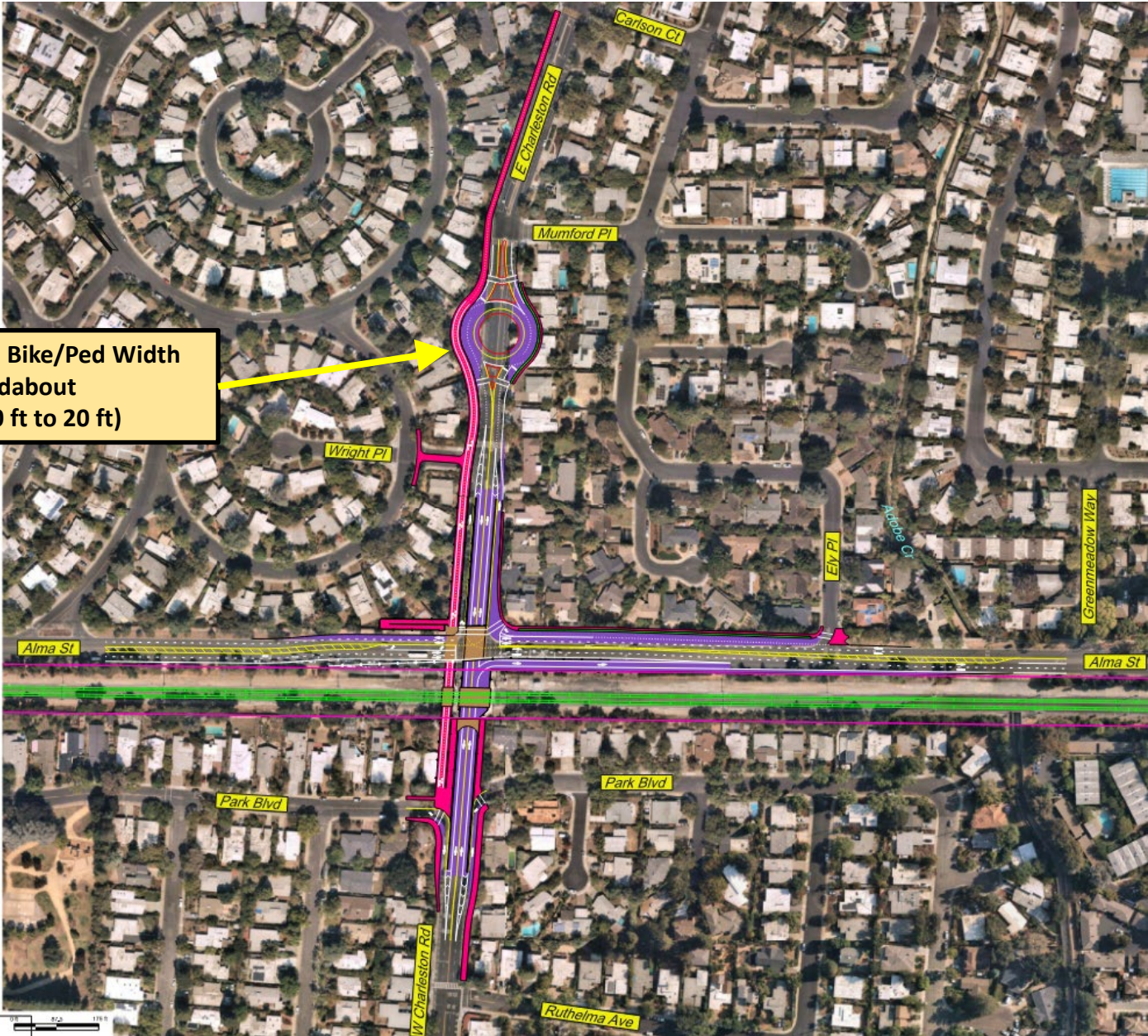
- LEGEND:**
- Track
 - Retaining Wall
 - Right-of-Way
 - Roadway Modifications
 - Ped/Bike Ramps & Sidewalks
 - Structure
 - Planting Area
 - Direction of Traffic

Design Updates – Charleston Rd Underpass

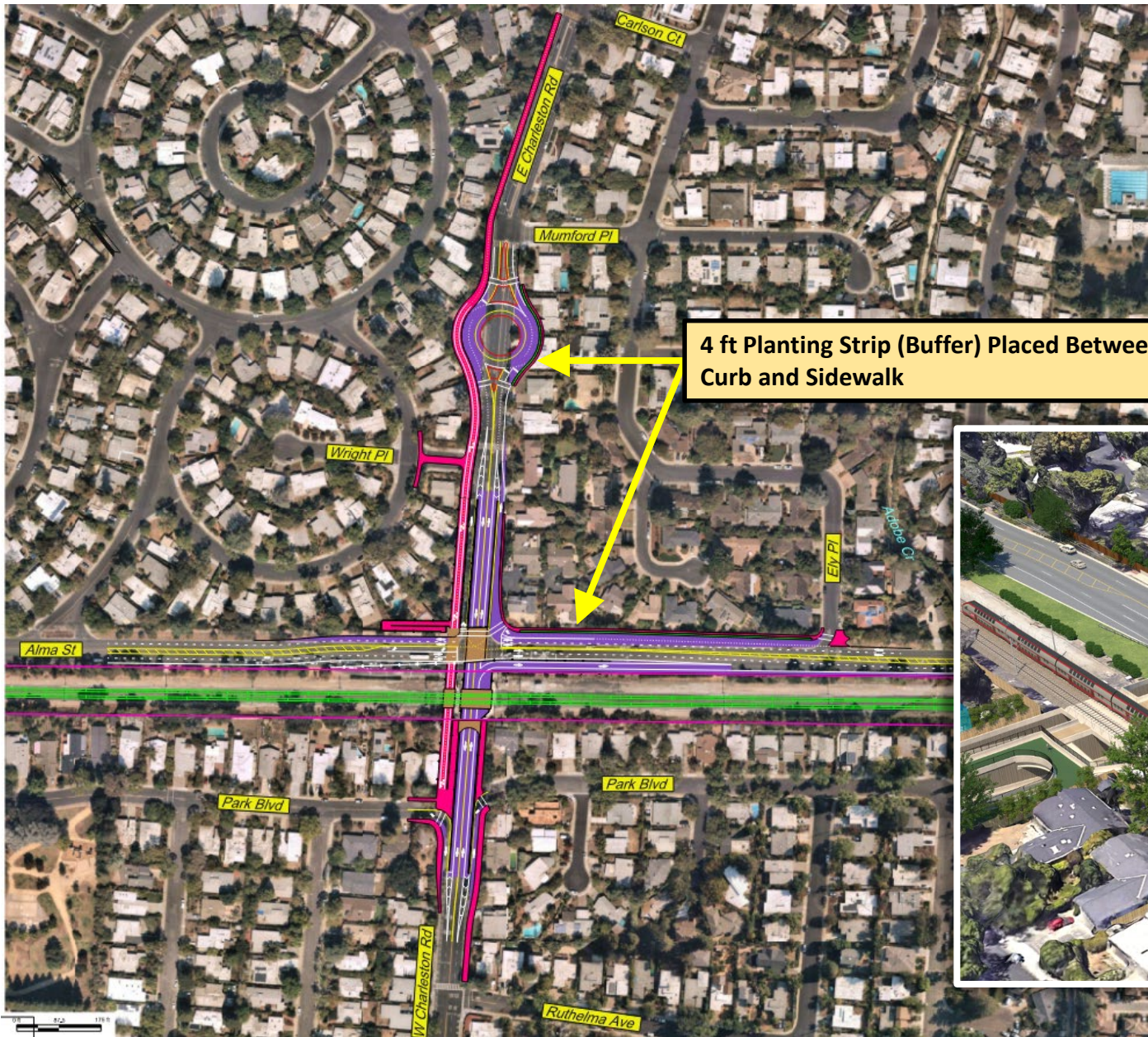


- LEGEND:**
- Track
 - Retaining Wall
 - Right-of-Way
 - Roadway Modifications
 - Ped/Bike Ramps & Sidewalks
 - Structure
 - Planting Area
 - Direction of Traffic

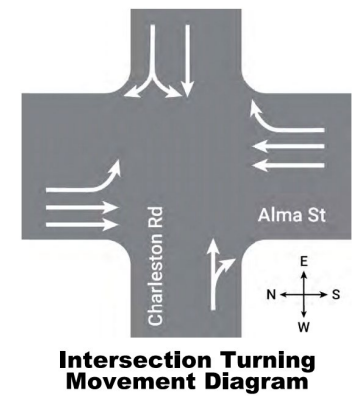
Uniform Bike/Ped Width
At Roundabout
(from 10 ft to 20 ft)



Design Updates – Charleston Rd Underpass



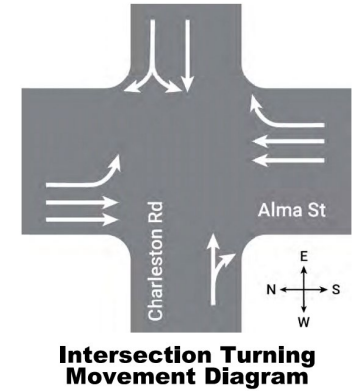
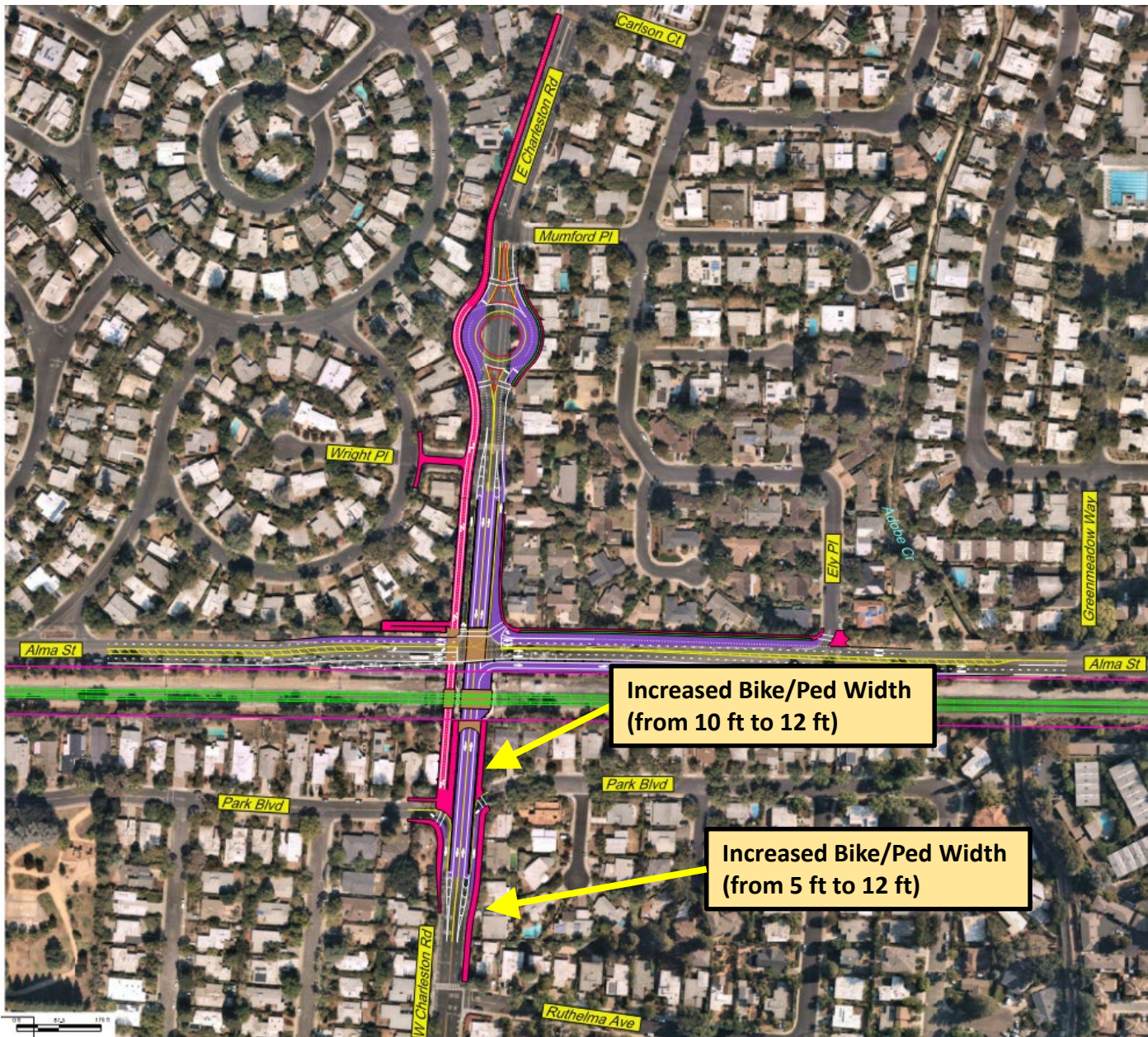
4 ft Planting Strip (Buffer) Placed Between Curb and Sidewalk



- LEGEND:**
- Track
 - Retaining Wall
 - Right-of-Way
 - Roadway Modifications
 - Ped/Bike Ramps & Sidewalks
 - Structure
 - Planting Area
 - Direction of Traffic

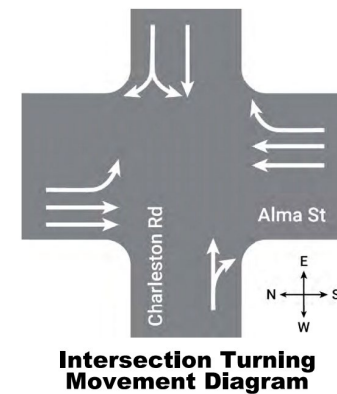
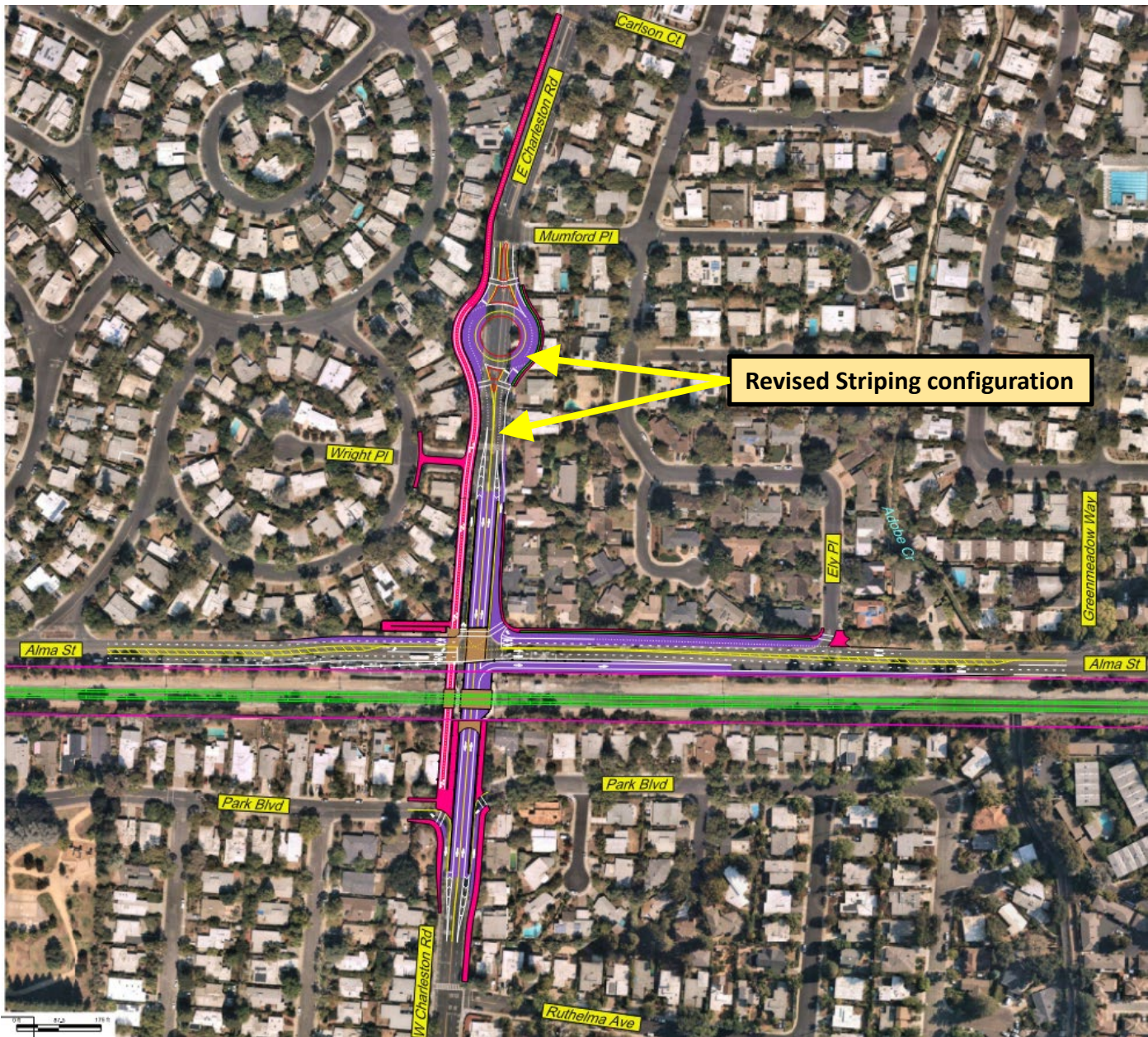


Design Updates – Charleston Rd Underpass



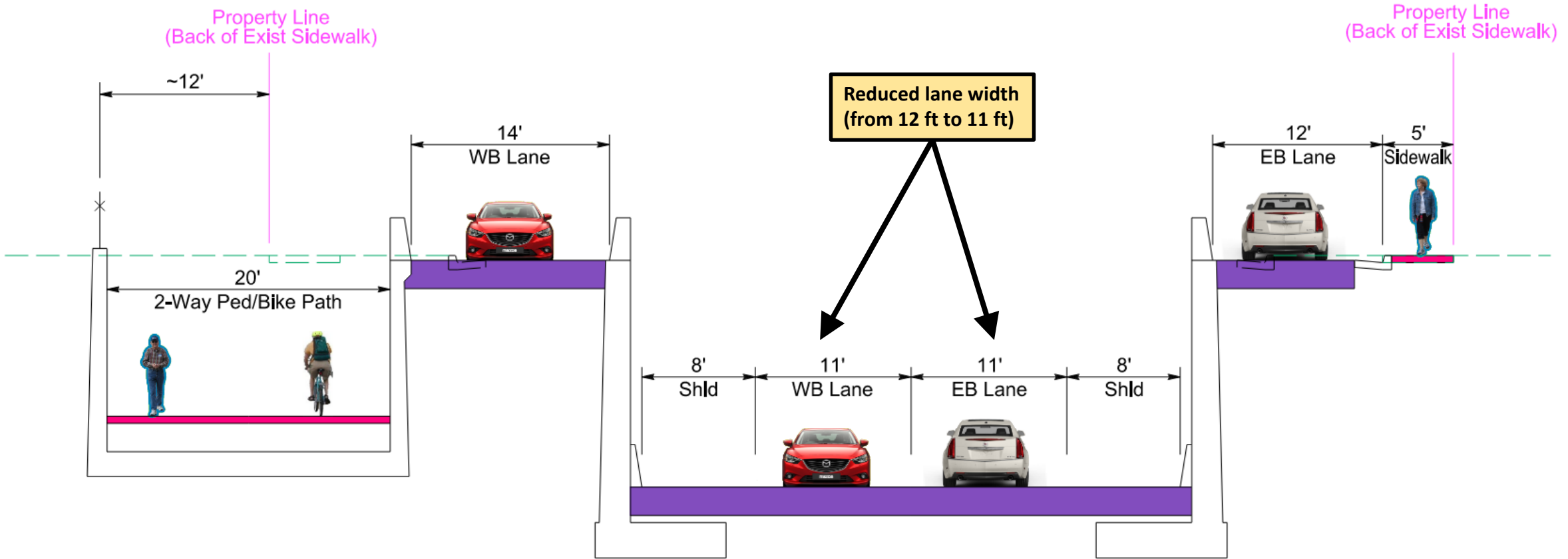
- LEGEND:**
- Track
 - Retaining Wall
 - Right-of-Way
 - Roadway Modifications
 - Ped/Bike Ramps & Sidewalks
 - Structure
 - Planting Area
 - Direction of Traffic

Design Updates – Charleston Rd Underpass



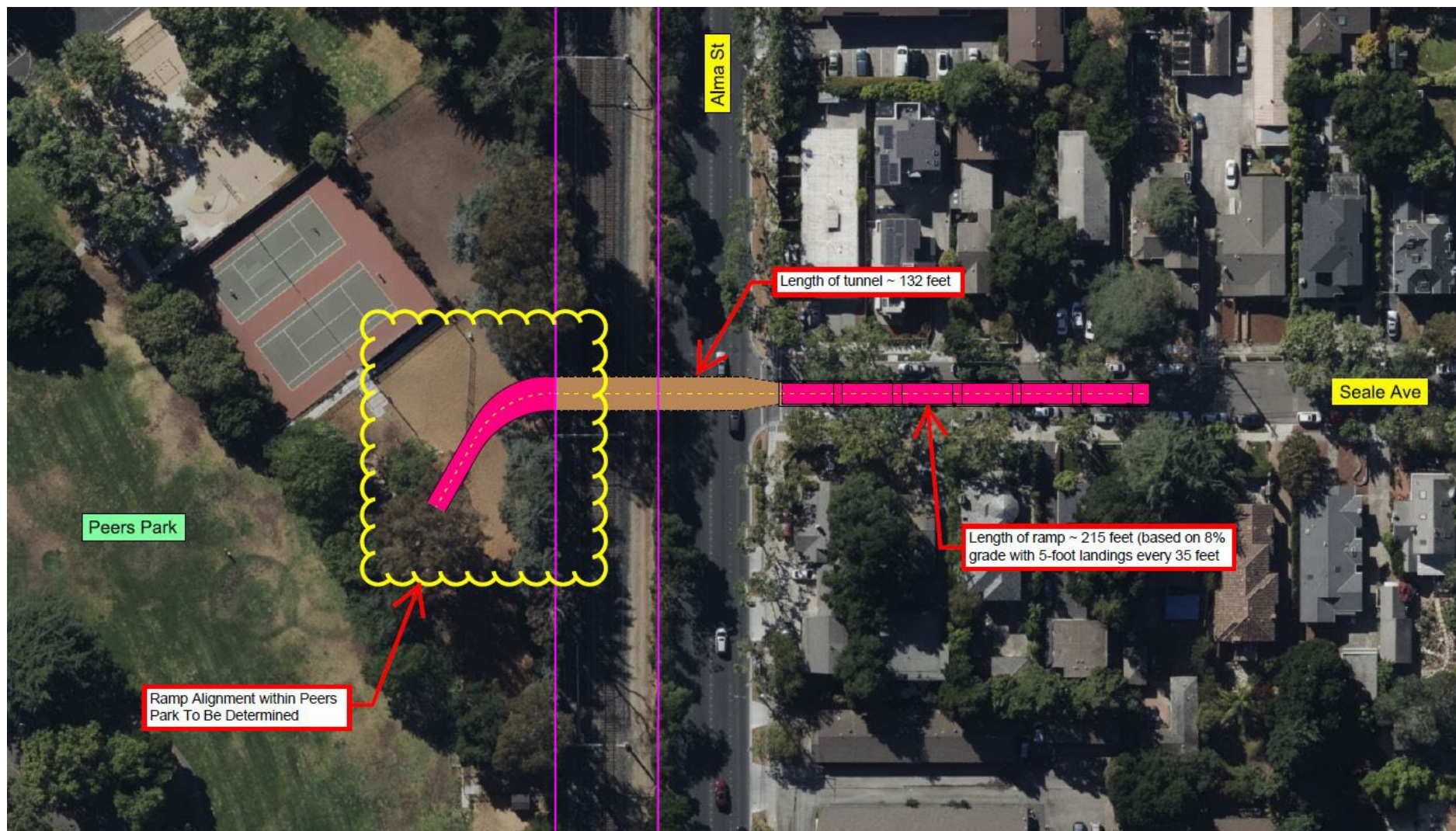
- LEGEND:**
- Track
 - Retaining Wall
 - Right-of-Way
 - Roadway Modifications
 - Ped/Bike Ramps & Sidewalks
 - Structure
 - Planting Area
 - Direction of Traffic

Design Updates – Charleston Rd Underpass



Typical Section - Charleston Rd Underpass

Seale Ave Crossing – Initial Concept



Evaluation of Bike/Ped Path on Each Side of Meadow and Charleston

- Direct Ramp Connections to/from Alma no Longer Possible
- No connection to/from Alma at East Meadow, all turns diverted to neighborhood streets or the Charleston Roundabout.
- All traffic from eastbound Charleston to southbound Alma diverted to the roundabout to make U-turn and then turn left at the Alma/Charleston traffic signal.
- Unacceptable vehicular delays (LOS F) at Alma/Charleston.
- Back-ups on Charleston through the roundabout.
- Long vehicular queues for the northbound right-turn and southbound left-turn at the Alma/Charleston intersection due to back-ups on Charleston.

Next Steps

- Additional Studies to Rail Committee for Review
 - Geotechnical Study (Fall 2023)
 - Cost Estimates – *Peer review of Trench Alternative* (On Hold)
 - Caltrain Review (Tentative - Summer 2024)
- Rail Committee to review alternatives for selection of the preferred alternative(s)
- City Council to approve selection of preferred alternative(s)



CITY OF
**PALO
ALTO**